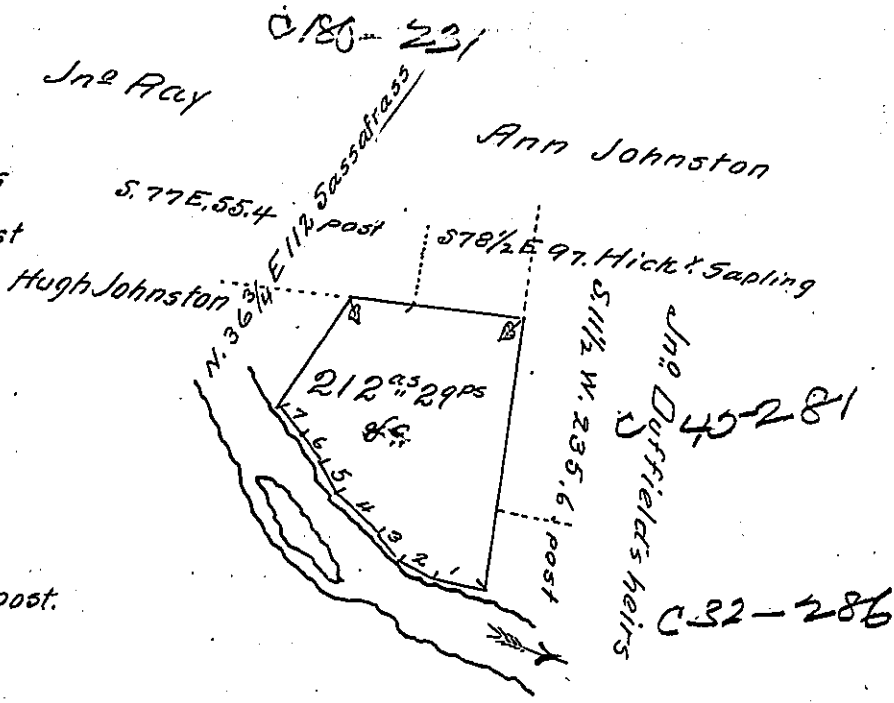


Courses and distances
up French Creek from post

- N^o 1 N 72 W 53
- " 2 N 55 1/4 W 31.4
- " 3 N 43 1/2 W 28.4
- " 4 N 40 W 45.5
- " 5 N 30 W 16.5
- " 6 N 25 W 49
- " 7 N 31 3/4 W 28.8 post.



Draft of a tract of land situate in Canal township Venango
 County, West of the Allegheny River on French Creek
 Surveyed 11th November 1851 for George Logue on his improve-
 ment and settlement

To J Porter Brawley Esq^r
 Surv^r Gen^l

IN TESTIMONY that the above is a copy of the original remaining on file in
 the Department of Internal Affairs of Pennsylvania, made
 conformably to an Act of Assembly approved the 16th day of
 February, 1833, I have hereunto set my Hand and caused
 the Seal of said Department to be affixed at Harrisburg,
 this eighteenth day of October 1905

La a o R Brown
 Secretary of Internal Affairs.